


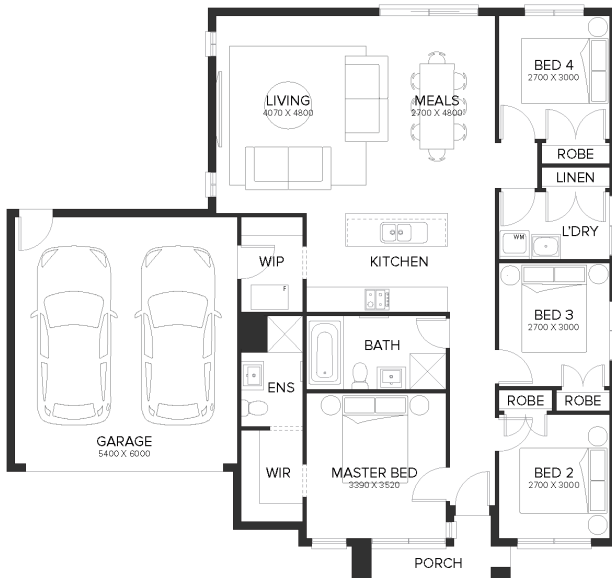



HOUSE & LAND PACKAGE

From **\$367,100***

LOT 201 Lighthorse Ave, Traralgon

4  2  1  2 **SUBIC 17****LOT SIZE 400 sqm****HOUSE AREA 162.55 sqm****Inclusions**

- Build Your Dream -Package Price From Only
- Garage Sectional Door In Contemporary Profile
- Flooring Throughout Home
- 2 Coat Paintwork
- Concrete Driveway upto 35m2
- Cat 1 Ceramic Floor Tiles To Laundry, Ensuite, Bathroom & WC
- Omega Appliances
- Gas Ducted Heating
- 45 litre Single Inset Stainless Steel Laundry Trough
- Batten Light Points
- Phoenix Tapware Throughout
- 2no Tv Points
- Telephone Point
- Ask Us About Our Upgrade Packs!

**For more information contact
Michelle on 0408832806**

* Package price is based on standard home, standard façade unless specified, builder's preferred siting and current promotion. Pricing may vary due to actual land availability. Sherridon Homes reserves the right to change prices without notice. Fixed price packages are subject to developer's design review panel for final approval. First Home Buyer price less First Home Owner Grant subject to SRO eligibility criteria. Photos for illustration purposes only and include examples of upgrades not included in the package price. Build zones apply. BAL rating up to 12.5 included (if applicable). Should client variations alter the requirements to achieve compliance, Sherridon Homes will debit or credit the client via a post contract variation. Contact sales consultant for more information regarding inclusions, promotions, rebates, pricing or special conditions. For additional terms and conditions see www.sherridonhomes.com.au/terms-conditions. Package price correct at 2021-07-14

Call **1300 188 668** or visit

Sherridon Ply Ltd | 56 Barclay Road, Derrimut, Victoria 3026 | VIC Builder's Licence: CDB-U 50039 | P +61 3 8390 5000 |

E info@sherridonhomes.com.au