

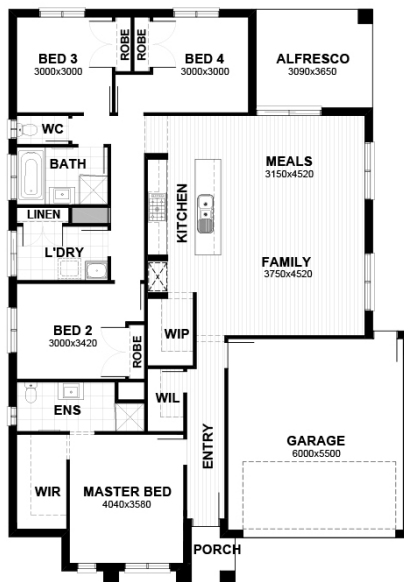


## HOUSE &amp; LAND PACKAGE

From **\$398,290\***

LOT 7 RIDD COURT \*INCL FHOG!, Seymour

4 2 1 2

**GENOA 22**

LOT SIZE 642 sqm

HOUSE AREA 204.06 sqm

THE  
VILLAGE  
- Seymour -**Inclusions**

- Build Your Dream With Fixed Price Site Costs & Connections
- Developer & Council Requirements
- Flooring Throughout Home
- Exposed Aggregate Driveway Up To 36m2
- Cat 1 Stone Benchtops to Kitchen/Ensuite/Bathroom/Powder Rm (House Specific)
- Evaporative Cooling
- Dishwasher
- Overhead Cupboards to Refrigerator Space
- 2590mm High Ceiling to Sgl Storey & Grnd Flr of Dbl Storey
- Blinds Throughout
- Smeg Appliances
- Brick Infill Above Double Garage

For more information contact  
Ashley on 0433 311 100

\* Package price is based on standard home, standard façade unless specified, builder's preferred siting and current promotion. Pricing may vary due to actual land availability. Sherridon Homes reserves the right to change prices without notice. Fixed price packages are subject to developer's design review panel for final approval. First Home Buyer price less First Home Owner Grant subject to SRO eligibility criteria. Photos for illustration purposes only and include examples of upgrades not included in the package price. Build zones apply. BAL rating up to 12.5 included (if applicable). Should client variations alter the requirements to achieve compliance, Sherridon Homes will debit or credit the client via a post contract variation. Contact sales consultant for more information regarding inclusions, promotions, rebates, pricing or special conditions. For additional terms and conditions see [www.sherridonthomes.com.au/terms-conditions](http://www.sherridonthomes.com.au/terms-conditions). Package price correct at 2021-01-08

Call **1300 188 668** or visit

Sherridon Ply Ltd | 56 Barclay Road, Derrimut, Victoria 3026 | VIC Builder's Licence: CDB-U 50039 | P +61 3 8390 5000 |

E [info@sherridonthomes.com.au](mailto:info@sherridonthomes.com.au)